



Product Specification Sheet  
CBD Personal Lubricant  
Full-Spectrum

Document #:  
PSS-LBE-ODIS-LBEB-LOL-PIN-BCY-56.7  
Version: 1.0  
Date: 23OCT2020  
Supersedes: NEW

30616 Bryant Drive  
Evergreen, CO 80439

Product Code:  
LBE-1000-ODIS-LBEB-LOL-PIN-BCY-56.7

Completed By: NJS  
Invoice #: 2023-163.1 ↓

### SECTION 1: PRODUCT DETAILS

PRODUCT NAME	CBD Personal Lubricant, Full-Spectrum
PRODUCT DESCRIPTION	Hemp-derived Cannabidiol (CBD) Personal Lubricant, Full-Spectrum
INTENDED USE	For Personal Lubricant use only. Do not apply on broken skin or open wounds.

COUNTRY OF ORIGIN	USA	LOT #	LBE-11823-B1
MANUFACTURE DATE	Apr 28, 2023	CBD POTENCY	1072.76 mg per container
BEST BUY DATE	Apr 28, 2025	NET WEIGHT	2oz ( 56.70g) per container

### SECTION 2: INGREDIENT INFORMATION

#### INGREDIENTS LIST

Ingredients: Organic Coconut Medium Chain Triglyceride (MCT) Oil (Organic Fractionated Coconut Oil), Organic Virgin Coconut Oil, Sunflower Oil, Organic Hemp Cannabidiol (CBD) Distillate, B-Caryophyllene, Linalool, B-Pinene. (Contains <0.3% THC)

*The FDA has not evaluated this product for safety or efficacy. This product is not intended to diagnose, treat, cure or prevent any disease.*

*d9-THC per container: 36.29mg/56.7g (0.64mg/g)*

### SECTION 3: STORAGE AND HANDLING

**STORAGE AND HANDLING** Store in original container in a cool, dark place. Keep out of direct light and humidity.

*This document is provided for documentation purposes only. The information contained herein is believed to be accurate and represents the best information currently available to Hammer Enterprises Integrated Solutions, LLC. However, Hammer Enterprises Integrated Solutions, LLC makes no warranty, expressed or implied, regarding such information, and assumes no liability resulting from its use. Users should make their own investigations to determine the information suitability for their particular purposes. If there are any questions concerning the information contained in this sheet or its applicability to a particular use, the user is instructed to contact Hammer Enterprises Integrated Solutions, LLC. Hammer Enterprises Integrated Solutions, LLC assumes no responsibility for injury from the use of the product described in this sheet in a way different from that provided in the label direction*



Product Description: Hemp CBD Personal Lubricant 1000mg/56.7g OFCO, OVCO, SFO, ODIS, BCY, LOL, PIN

Invoice Number: 2023-163.1

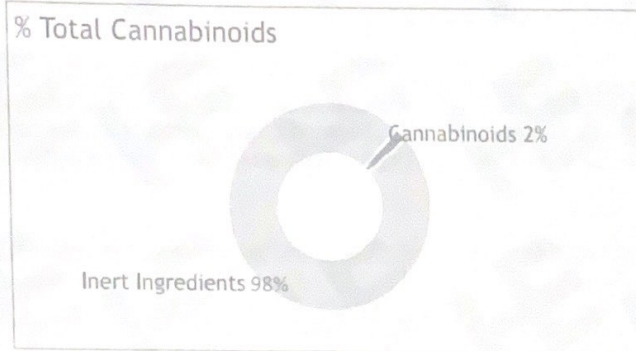
Lot Number: LBE-11823-B1

Manufacture Date: Apr 28, 2023

Product Code: LBE-1000-ODIS-LBEB-LOL-PIN-BCY-56.7 Date of Analysis: May 04, 2023

Best By Date: Apr 28, 2025

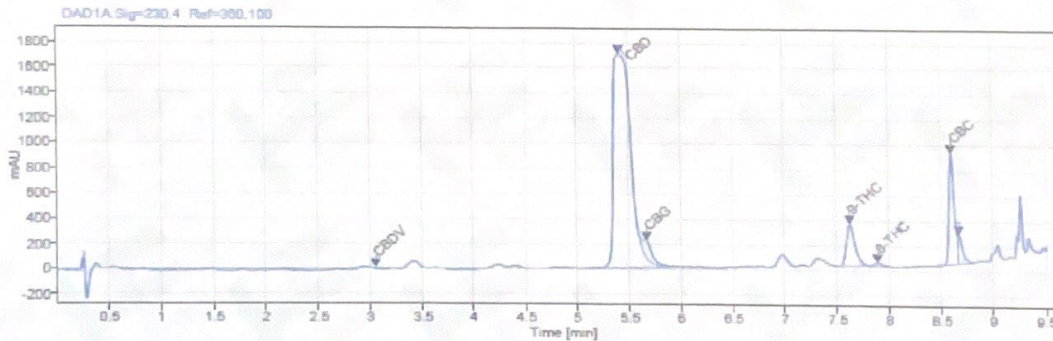
**Cannabinoid Potency - Expected CBD: 17.64 mg/g ± 10%**



	mg/g	%	LOQ (mg/g)
Total CBD:	18.92 mg/g	1.89%	0.05 mg/g
CBD:	18.92 mg/g	1.89%	0.05 mg/g
CBDa:	<LOD	<LOD	0.05 mg/g
d9-THC:	0.64 mg/g	0.06%	0.05 mg/g
CBC:	0.48 mg/g	0.05%	0.05 mg/g
CBG:	0.29 mg/g	0.03%	0.05 mg/g
CBGa:	<LOD	<LOD	0.05 mg/g
CBN:	0.07 mg/g	0.01%	0.05 mg/g
CBDV:	<LOQ	<LOQ	0.05 mg/g
dB-THC:	0.44 mg/g	0.04%	0.05 mg/g
THCa:	<LOD	<LOD	0.05 mg/g
Density:	0.928 (kg/m3)	Specific Gravity:	0.931

\*Total d9-THC and CBD are calculated taking into account the loss of a carboxyl group during decarboxylation. The formulas are as follows: d9-THC = d9THC + (THCa \* (0.877)) CBD = CBD + (CBDa \* (0.877))  
 \*\*Any compounds with results listed as "<LOD" were below the Limit of Detection and were not detected.  
 \*\*\*LOQ is the limit of quantitation for any given analyte.

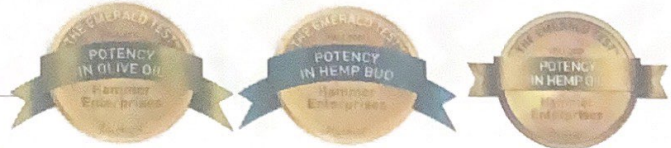
**Chromatogram**



Prepared By: N. Stasi  
Operations Manager  
May 9, 2023

*N. Stasi*  
*E. Casey*

Reviewed By: E. Casey  
Formulation and R&D Manager  
May 9, 2023



Analyzed via HPLC Under These Conditions: Humidity: 31% Temperature: 71.5 °F

ISO 9001 2015 Certificate Number: US4293

Certificate of Analysis test results are based only on the analysis of the product listed in the "Product Description" of this form. Hammer Enterprises, LLC makes no claims as to the efficacy, safety, or other risks associated with any detected or non-detected compounds reported herein. All analyses conducted at Hammer Enterprises, LLC is performed on well-maintained, quality instruments utilizing Good Laboratory Practices and validated methodology. This Certificate may not be reproduced except in full, without the written approval of Hammer Enterprises, LLC. DISCLAIMER: When reviewing certificate ensure watermark is complete and intact. Watermark will present as repeating HE logos diagonally across the entire page. The authenticity of this document is not guaranteed if there is evident modification, blocking, or alterations of the watermark.