

Product Description: Hemp CBD Tincture 1000mg/30mL OFCO, OVAN, ODIS, OCO2, OPNB, OCRN, BCY, BPIN

Invoice Number: 2021-644B

Lot Number: T-35521-B2

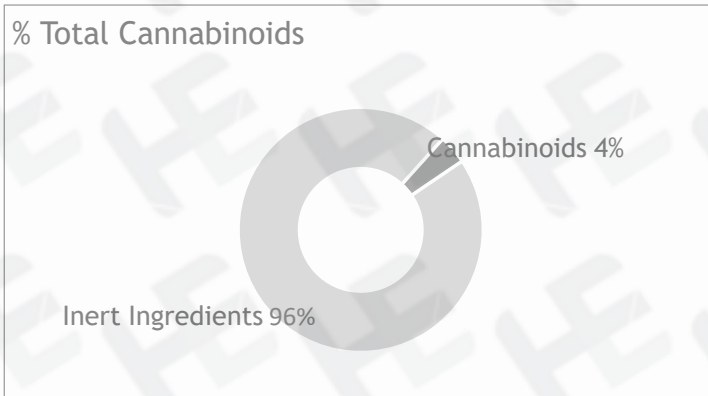
Manufacture Date: Dec 21, 2021

Product Code: T-1000-OCO2-ODIS-OFECO-OLDFASH-30

Date of Analysis: Dec 23, 2021

Best By Date: Jun 21, 2023

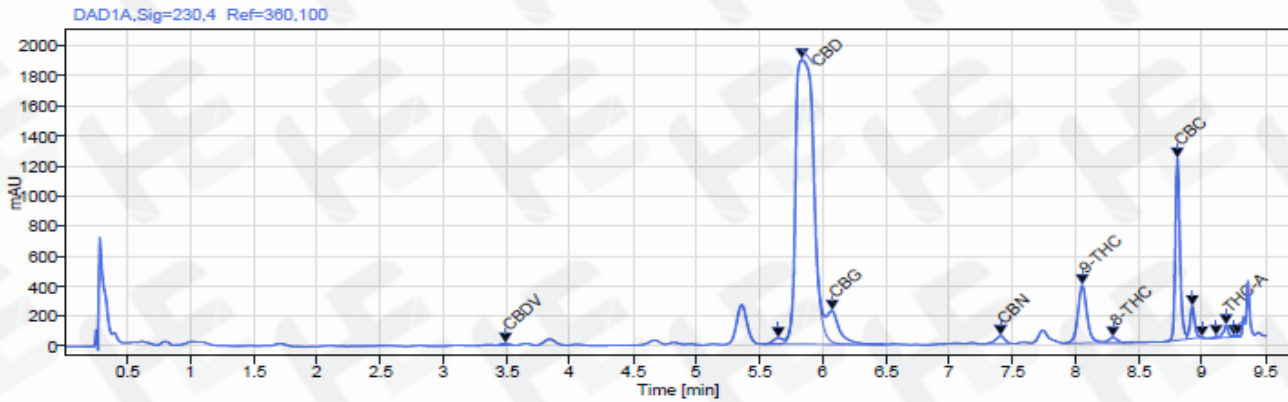
Cannabinoid Potency - Expected CBD: 33.33 mg/mL ± 10%



	mg/mL	%	LOQ (mg/mL)
Total CBD:	35.93 mg/mL	3.59%	0.05 mg/mL
CBD:	35.93 mg/mL	3.59%	0.05 mg/mL
CBDa:	<LOD	<LOD	0.05 mg/mL
d9-THC:	1.50 mg/mL	0.15%	0.05 mg/mL
CBC:	1.17 mg/mL	0.12%	0.05 mg/mL
CBG:	1.21 mg/mL	0.12%	0.05 mg/mL
CBGa:	<LOD	<LOD	0.05 mg/mL
CBN:	0.08 mg/mL	0.01%	0.05 mg/mL
CBDV:	<LOD	<LOD	0.05 mg/mL
d8-THC:	0.17 mg/mL	0.02%	0.05 mg/mL
THCa:	0.08 mg/mL	0.01%	0.05 mg/mL
Density:	0.949 (kg/m3)	Specific Gravity:	0.952

*Total d9-THC and CBD are calculated taking into account the loss of a carboxyl group during decarboxylation. The formulas are as follows : d9-THC = d9THC + (THCa * (0.877)) CBD = CBD + (CBDa * (0.877))
 **Any compounds with results listed as "<LOD" were below the Limit of Detection and were not detected.
 ***LOQ is the limit of quantitation for any given analyte.

Chromatogram



Prepared By: N. Stasi
Operations Manager
May 3, 2022


Reviewed By: E. Casey
Formulation and R&D Manager
May 3, 2022



Analyzed via HPLC Under These Conditions: Humidity: 26% Temperature: 73.0 °F

ISO 9001:2015 Certificate Number: US4293

Certificate of Analysis test results are based only on the analysis of the product listed in the "Product Description" of this form. Hammer Enterprises, LLC, makes no claims as to the efficacy, safety, or other risks associated with any detected or non-detected compounds reported herein. All analyses conducted at Hammer Enterprises, LLC, is performed on well-maintained, quality instruments utilizing Good Laboratory Practices and validated methodology. This Certificate may not be reproduced except in full, without the written approval of Hammer Enterprises, LLC. **DISCLAIMER:** When reviewing certificate ensure watermark is complete and intact. Watermark will present as repeating HE logos diagonally across the entire page. The authenticity of this document is not guaranteed if there is evident modification, blocking, or alterations of the watermark.

	Product Specification Sheet: Organic Coconut MCT (Organic Fractionated Coconut Oil) Tincture, Bourbon Flavored, Bottled Full-Spectrum	Document #: PSS-T-OCO2-OFECO-OLDFASH-30 Version: 1.0 Issue Date: 02/20/2020 Supersedes: NEW
	30616 Bryant Drive Evergreen, CO 80439	Product Code: T-1000-OCO2-ODIS-OFECO-OLDFASH-30

SECTION 1: PRODUCT DETAILS

PRODUCT NAME	Hemp-derived Cannabidiol (CBD) Tincture – Organic Coconut Medium Chain Triglyceride (MCT) Oil (Organic Fractionated Coconut Oil) Base, Full-Spectrum		
PRODUCT DESCRIPTION	CBD Tincture in Organic Coconut Medium Chain Triglyceride (MCT) Oil (Organic Fractionated Coconut Oil), Full-Spectrum		
INTENDED USE	For oral consumption.		
COUNTRY OF ORIGIN	USA	LOT #	T-35521-B2
MANUFACTURE DATE	Dec 21, 2021	CBD POTENCY	35.93 mg/mL
BEST BY DATE	Jun 21, 2023	NET WEIGHT	1 fl. oz (30 mL) per bottle

SECTION 2: INGREDIENT AND NUTRITION INFORMATION

INGREDIENTS LIST	NUTRITION FACTS PANEL																												
<p>Ingredients: Organic Coconut Medium Chain Triglyceride (MCT) Oil (Organic Fractionated Coconut Oil), Organic Hemp Cannabidiol (CBD) Distillate, Organic Hemp Cannabidiol (CBD) Oil, Bourbon Flavoring (organic sunflower seed oil, natural flavors), Cold Pressed Orange Oil, Beta-Caryophyllene, Alpha Pinene. <i>(Contains <0.3% THC).</i></p> <p>CONTAINS: COCONUTS.</p> <p><i>Store in original container in a cool, dark place. Keep out of direct light and humidity.</i></p> <p>Directions for Use: <i>Take 1-2 servings as needed.</i></p> <p>Precautionary Allergen Statement: <i>Manufactured in a facility that handles almonds, anchovy, coconut, salmon, soy, and walnuts.</i></p> <p><i>The FDA has not evaluated this product for safety or efficacy. This product is intended for oral use. This product is not intended to diagnose, treat, cure or prevent any disease.</i></p> <p>d9-THC per container: 45.0mg/30mL (1.50mg/mL)</p>	<div style="border: 1px solid black; padding: 5px;"> <h2 style="margin: 0;">Nutrition Facts</h2> <p>30 servings per container</p> <p>Serving size 0.2 tsp (1ml)</p> <hr/> <p>Amount per serving</p> <p>Calories 10</p> <p style="text-align: right; font-size: small;">% Daily Value*</p> <table style="width: 100%; border-collapse: collapse;"> <tr><td style="border-top: 1px solid black;">Total Fat 1g</td><td style="text-align: right; border-top: 1px solid black;">1%</td></tr> <tr><td style="border-top: 1px solid black;">Saturated Fat 1g</td><td style="text-align: right; border-top: 1px solid black;">5%</td></tr> <tr><td style="border-top: 1px solid black;">Trans Fat 0g</td><td style="text-align: right; border-top: 1px solid black;"></td></tr> <tr><td style="border-top: 1px solid black;">Cholesterol 0mg</td><td style="text-align: right; border-top: 1px solid black;">0%</td></tr> <tr><td style="border-top: 1px solid black;">Sodium 0mg</td><td style="text-align: right; border-top: 1px solid black;">0%</td></tr> <tr><td style="border-top: 1px solid black;">Total Carbohydrate 0g</td><td style="text-align: right; border-top: 1px solid black;">0%</td></tr> <tr><td style="border-top: 1px solid black;">Dietary Fiber 0g</td><td style="text-align: right; border-top: 1px solid black;">0%</td></tr> <tr><td style="border-top: 1px solid black;">Total Sugars 0g</td><td style="text-align: right; border-top: 1px solid black;"></td></tr> <tr><td style="border-top: 1px solid black;">Includes 0g Added Sugars</td><td style="text-align: right; border-top: 1px solid black;">0%</td></tr> <tr><td style="border-top: 1px solid black;">Protein 0g</td><td style="text-align: right; border-top: 1px solid black;"></td></tr> <tr><td style="border-top: 1px solid black;">Vitamin D 0mcg</td><td style="text-align: right; border-top: 1px solid black;">0%</td></tr> <tr><td style="border-top: 1px solid black;">Calcium 0mg</td><td style="text-align: right; border-top: 1px solid black;">0%</td></tr> <tr><td style="border-top: 1px solid black;">Iron 0mg</td><td style="text-align: right; border-top: 1px solid black;">0%</td></tr> <tr><td style="border-top: 1px solid black;">Potassium 0mg</td><td style="text-align: right; border-top: 1px solid black;">0%</td></tr> </table> <p style="font-size: x-small; margin-top: 5px;">*The % Daily Value tells you how much a nutrient in a serving of food contributes to a daily diet. 2,000 calories a day is used for general nutrition advice.</p> </div>	Total Fat 1g	1%	Saturated Fat 1g	5%	Trans Fat 0g		Cholesterol 0mg	0%	Sodium 0mg	0%	Total Carbohydrate 0g	0%	Dietary Fiber 0g	0%	Total Sugars 0g		Includes 0g Added Sugars	0%	Protein 0g		Vitamin D 0mcg	0%	Calcium 0mg	0%	Iron 0mg	0%	Potassium 0mg	0%
Total Fat 1g	1%																												
Saturated Fat 1g	5%																												
Trans Fat 0g																													
Cholesterol 0mg	0%																												
Sodium 0mg	0%																												
Total Carbohydrate 0g	0%																												
Dietary Fiber 0g	0%																												
Total Sugars 0g																													
Includes 0g Added Sugars	0%																												
Protein 0g																													
Vitamin D 0mcg	0%																												
Calcium 0mg	0%																												
Iron 0mg	0%																												
Potassium 0mg	0%																												

This document is provided for documentation purposes only. The information contained herein is believed to be accurate and represents the best information currently available to Hammer Enterprises Integrated Solutions, LLC. However, Hammer Enterprises Integrated Solutions, LLC makes no warranty, expressed or implied, regarding such information, and assumes no liability resulting from its use. Users should make their own investigations to determine the information suitability for their particular purpose. If there are any questions concerning the information contained in this sheet or its applicability to a particular use, the user is instructed to contact Hammer Enterprises Integrated Solutions, LLC. Hammer Enterprises Integrated Solutions, LLC assumes no responsibility for injury from the use of the product described in this sheet in a way different from that provided in the label directions.